

INDEX	
Vibration massage and sessions	2
Equipment and applicators	3
Speed levels and technical specifications	4
Web information	5

Vibration massage with **U-Tech** from Weelko

Cellulite? **Dimply skin?** Stretch marks? **Blood flow problems?** Muscular and articulation problems?
Constipation? Lymphatic problems? **Oedemas?** Overweight? **Liquid retention?** Menopause? **Flaccidity?**
Fatigue? **Stress?**

Experience a good massage with **U-Tech, F-833**

Vibration body massage equipment equipped with 5 applicators for different treatments. Digital unit mounted on a wheel-base column and a tray to fit the different applicators.

Our TECHNICAL ZOOM presents you all the details and features and gives you the opportunity to know our equipment in great depth.

The vibration massage equipment is put in the Weelko spotlight. Discover everything here inside.



The vibration massage

About the vibration massage

The vibrotherapy is an advanced technique conceived to provide an active treatment to the skin and muscles. It works with a system that generates pressure by means of a rotary and vibratory head. It is used by way of a therapeutic treatment applying mechanical vibration on different parts of the body.

What does it consist of?

The unit with an adapted head generates low-frequency vibration that produces a mechanical wave at the same time. This wave is expanded along the different layers of the skin with more or less depth according to the used frequency. The lower the frequency is, the deeper it acts on the skin. The higher frequency levels (up to 40 Hz) act in a more superficial way. The operation is based on an oscillating head onto which several applicators get adapted according to different treatments.

Which are the effects?

- Stimulate the cellular proliferation
- Eliminate the cutaneous imperfections
- Provide a greater firmness of the skin
- Contribute to a quicker cutaneous regeneration
- Improve the cellular nutrition and the oxygenation
- Eliminate toxins and give a greater luminosity to the skin
- Improve the lymphatic drainage and the decongestion
- Provide a well-being and relaxing sensation
- Unblock and reduce the excess fat

What is it appropriate for?

- Cellulite and dimply skin
- Tired legs
- Liquid retention
- Slimming and toning treatments
- Osteoarticular pain
- Stress and tiredness
- Lymphatic problems
- Muscular problems
- Antistress treatment
- Lymphatic drainage massage
- Muscular toning
- Passive exercising in paralysed muscles
- Supplementary physiotherapy treatments

Which are the contraindications?

- People suffering from heart problems
- People having pacemakers
- Infectious and inflammatory illnesses in its acutest phase
- Osseous fractures
- Open wounds
- Pregnancy
- Low and high blood pressure problems
- Varicose veins, thrombophlebitis and lymphangitis
- Cardiovascular problems, phlebitis or thrombosis
- Diabetes
- Epilepsy
- Eczemas, psoriasis

SESSIONS

The recommended time for a session ranges between 30 and 60 minutes according to the type of treatment. The professional will have to plan every treatment and the corresponding intervals between sessions depending on the patient needs and the massage function.

Equipment and applicators



Fig 1



Fig 2



Fig 3



Fig 4



Fig 5

Applicator 1: Silicone round-shaped applicator with long prong to apply massage in great depth. Use it at low speed (between the levels 1 and 2). In order to stimulate the epidermis, equipment should be used at a maximum speed (level 5).

Applicator 2: Silicone round-shaped applicator with multiple short prongs that works at the epidermis depth. Suitable for stimulation, exfoliation, vasodilation and revitalisation massage treatments. It is used on the back, thighs and buttocks. It is recommended to use it at a level 5. It prepares the skin so as to facilitate the penetration of slimming lotions and body oils. It is applied on sporting treatments before exercising because of its hyperemiant action locally generated with the massage (levels 4 and 5).

Applicator 3: Smooth and versatile sponge circular applicator conceived for sensitive parts of the body. It applies a soft and light massage. It is used before and after starting treatments to prepare the tissues and release tension. The recommended speed levels are between the 3 and 5. Use a fibre or paper disposable case so as to cover the applicator during the session.

Applicator 4: Rubber square-shaped applicator with 4 half balls. Ideal for massage on shoulders, back, thighs and buttocks. Speed levels 1, 2 and 3.

Applicator 5: V-shaped sponge applicator suitable for working the shoulders, neck, back, legs and knees zones. It is appropriated for relaxing treatments so as to combat daily stress. Use a fibre or paper disposable case to cover the applicator during the session. Use this applicator at speed levels 2, 3 and 4.

Speed levels

The equipment consists of 5 speed levels. The lower the frequency is, the deeper the mechanical waves act. The lowest speed levels are recommended for muscular and hypodermic stimulation. The highest levels act on the epidermis.

Speed level 1: Approximately 13 Hz. It acts on the hypodermis and the deep layer of the dermis (muscular level)

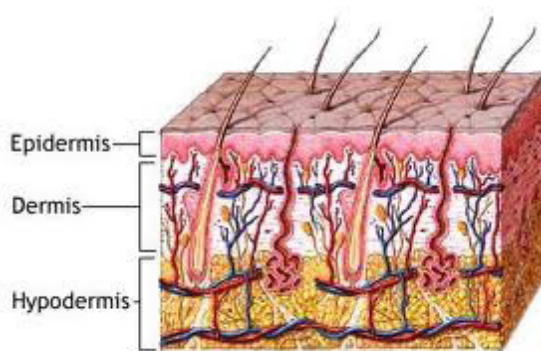
Speed level 2: Approximately 17 Hz. It acts on arteries and veins and on the lymphatic and nervous system.

Speed level 3: Approximately 22 Hz. It acts on the dermis layer.

Speed level 4: Approximately 28 Hz. It acts on the dermis layer.

Speed level 5: Approximately 40 Hz. It acts on the epidermis layer.

It acts on the basal or germ layer. It stimulates the cellular proliferation and eliminates the cutaneous imperfections.



Epidermis: The outermost layer of cells in the skin. It is composed of 4 layers named (from the outermost to the lowermost): cornified, translucent, granular, spinous and germ layers. Dead cells are localised in this layer.

Dermis: Medium layer responsible for skin resistance and elasticity. Collagen, elastine, blood and lymph vessels, veins and arteries.

Hypodermis: Subcutaneous tissue is the lowermost layer. Adipose cells.

Technical Specifications

Dimensions and weight	Packing size (cm)	83,5 x 42,5 x 39,5
	Product size (cm)	41x17/24x13
	Gross weight (kg)	15
	Net weight (kg)	18,6
Working parameters		To 40 Hz
Technical specifications	Voltage	220V—240V
	Frequency	50 Hz/60Hz

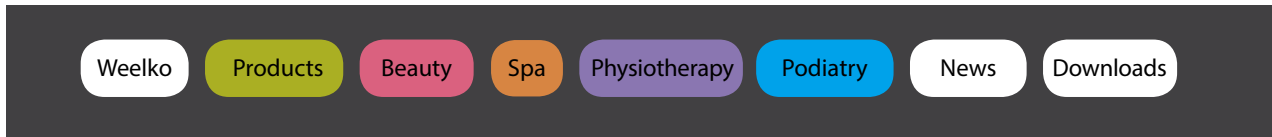
Spare parts

No.	PRODUCT	REFERENCE
1	Long-prong applicator	40025-5
2	Multiple-prong applicator	40025-4
3	Soft sponge applicator	40025-1
4	4 half-ball applicator	40025-2
5	V-shaped applicator	40025-3
6	Set of 5 applicators	40025
7	Rotary head	50064-1
8	Flexible pipe	50064



Visit our TECHNICAL INFO and download all the technical information that you may need. Pictures, dossiers, technical sheets, etc. Do not miss them. dossiers, fichas técnicas, etc. No te lo pierdas!

Dossiers | Technical Zoom



TheWellness Company

Contenidos:

- 1 Ultrasonidos
- 2 Alas Preventia B. Neoterm & Spray
- 3 Dressage 4. Piel y Ultratónico
- 4 Microdermoabrasion con diamante & Microondas
- 5 Masaje
- 6.1.7 Masaje terapia
- 8 Masaje sauna y bienestar de mentes
- 9 Masaje corporal & Martillo Trio
- 10 Radiofrecuencia & Cavitation
- 11 Cuartos de alta conductividad y BIODIFFUSION
- 12.11.3 Electroestimulacion
- 14.15 Vaporizadores
- 14.17 Esterilizadores
- 14.21.1 Recambios

Tratamientos estéticos con la aparatología profesional Weelko

Weelko es un concepto nuevo que trasciende los productos de bienestar. Es una actitud y una forma de entender el bienestar en una escala global, una manera de cuidar a los más pequeños detallada con el fin de atender a las personas. Para aquellos que disfrutan de nuestro equipo y mobiliario se encuentran en el más amplio sentido de la palabra.

Con este objetivo, desarrollamos líneas específicas para las áreas de **Estética y Podología**. Todos ellos diseñados para garantizar el máximo bienestar a los profesionales y a sus pacientes sin olvidar aquellos especialistas en la distribución que confían en la calidad de nuestro servicio. Desde Europa el cruce de sus fronteras.

Algunos ajustables, métodos relativos de uso, líneas ergonómicas, texturas agradables, espacios de almacenamiento mínimo, instrucciones fáciles de entender y montajes simples son, entre otros, los factores que hacen los productos Weelko prácticos, funcionales y, sobre todo, cómodos. De proporción lo esencial.

Lo sugerido se deja de lado. Productos tecnológicamente avanzados diseñados para trabajar de una manera más agradable. Cuanto más fácil, mejor.

Wellcome to Weelko, the wellness company that makes it easy. Come in, feel good and relax.

TheWellness Company

Contenidos:

- 2.3 CURB 2244A & 2246C
- 4.3 TABRE 2240A & 2240C
- 5.4 NMI 2237A
- 6.9 MEDIAL 2232C
- 10 EXTENS 2232A
- 11 SOL 2231A
- 12 ALX & ERD + OPCIONES
- 13 ARTICULO

One step ahead

Weelko es un nuevo concepto que va más allá de los productos de bienestar. Es una actitud y una forma de entender el bienestar a nivel global. De cuidar los detalles para cuidar a las personas. De conseguir que quienes disfrutan de nuestros equipos y mobiliario se sientan cómodos en el sentido más amplio de la palabra.

Con este objetivo desarrollamos líneas específicas para **Estética y Podología**. Todos ellos pensados para garantizar el máximo bienestar a los profesionales y a sus pacientes, sin olvidar a los especialistas en distribución que confían en la calidad de nuestro servicio. Desde Europa hacia todo el mundo.

Alturas regulables, formas de uso intuitivas, líneas ergonómicas, texturas agradables, espacios de almacenamiento mínimos, instrucciones fáciles de entender, montajes simples, son muchos los factores que contribuyen a que los productos Weelko sean prácticos, funcionales y, por encima de todo, cómodos. Con todo lo necesario y sin nada superfluo. Tecnología, funcionalidad y podología. Todos ellos pensados para garantizar el máximo bienestar a los profesionales y a sus pacientes, sin olvidar a los especialistas en distribución que confían en la calidad de nuestro servicio. Desde Europa hacia todo el mundo.

Wellcome to Weelko, the wellness company that makes it easy. Come in, feel good and relax.

Technical Zoom

Contenido

Contenido	Página
TABLE	2
Algoritmo de ondas	2
Programa de ultrasonidos de gel	4
Drenaje linfático, aplicación técnica y pines de drenaje	6
Introducción web	6

Pressothérapie avec U-Tech de Weelko

Cellulite? Plein d'orange? Pas de problème! Meilleure circulation sanguine? Cellulites localisées? Problèmes articulaires? Contour corporel? Sans peur d'œdèmes? Problèmes lymphatiques? Œdèmes? Retention de liquide? C'est ce que nous avons développé! Massage U-Tech? Fasciite? Surpoids? Drenage? Fatigue? Jambes lourdes?

Atinez votre silhouette avec U-Tech, F-826

Équipe de pressothérapie formée par une unité de contrôle digital avec écran LCD et veste formée par des bombes, ventouse et respirateurs pour les bras.

Notre TECHNICAL ZOOM vous montre tous les détails, toutes les particularités et vous offre la possibilité de commander les produits spécifiques d'authenticité.

La pressothérapie, la loupe de Weelko. Découvrez-la à l'institut.

